



Cubilin Polyclonal Antibody

Catalog No	YP-Ab-13186
Isotype	IgG
Reactivity	Human;Rat;Mouse;
Applications	IHC;IF;WB;ELISA
Gene Name	CUBN
Protein Name	Cubilin
Immunogen	Synthesized peptide derived from the N-terminal region of human Cubilin.
Specificity	Cubilin Polyclonal Antibody detects endogenous levels of Cubilin protein.
Formulation	Liquid in PBS containing 50% glycerol, 0.5% BSA and 0.02% sodium azide.
Source	Polyclonal, Rabbit,IgG
Purification	The antibody was affinity-purified from rabbit antiserum by affinity-chromatography using epitope-specific immunogen.
Dilution	WB 1:500-2000 IHC: 1/100 - 1/300. ELISA: 1/40000.. IF 1:50-200
Concentration	1 mg/ml
Purity	≥90%
Storage Stability	-20°C/1 year
Synonyms	CUBN; IFCR; Cubilin; 460 kDa receptor; Intestinal intrinsic factor receptor; Intrinsic factor-cobalamin receptor; Intrinsic factor-vitamin B12 receptor
Observed Band	400kD
Cell Pathway	Apical cell membrane ; Peripheral membrane protein . Cell membrane ; Peripheral membrane protein . Membrane, coated pit . Endosome . Lysosome membrane ; Peripheral membrane protein . Lacks a transmembrane domain and depends on interaction with AMN for location at the plasma membrane (PubMed:29402915, PubMed:30523278). Colocalizes with AMN and LRP2 in the endocytotic apparatus of epithelial cells (By similarity). .
Tissue Specificity	Detected in kidney cortex (at protein level) (PubMed:9572993). Expressed in kidney proximal tubule cells, placenta, visceral yolk-sac cells and in absorptive intestinal cells. Expressed in the epithelium of intestine and kidney.
Function	disease:Defects in CUBN are a cause of recessive hereditary megaloblastic anemia 1 (MGA1) [MIM:261100]; also referred to as MGA1 Norwegian type or Imerslund-Grasbeck syndrome (I-GS). MGA1 is due to selective malabsorption of vitamin B12. Defects in vitamin B12 absorption lead to impaired function of thymidine synthase. As a consequence DNA synthesis is interrupted. Rapidly dividing cells involved in erythropoiesis are particularly affected..domain:The CUB domains 5 to 8 mediate binding to GIF and ALB. CUB domains 1 and 2 mediate interaction with LRP2..function:Cotransporter which plays a role in lipoprotein, vitamin and iron metabolism, by facilitating their uptake. Binds to ALB, MB, Kappa and lambda-light chains, TF, hemoglobin, GC, SCGB1A1, APOA1, high density



lipoprotein, and the GIF-cobalamin complex. The binding of all ligands required calcium. Serves as important transporter in sev

Background

Cubulin (CUBN) acts as a receptor for intrinsic factor-vitamin B12 complexes. The role of receptor is supported by the presence of 27 CUB domains. Cubulin is located within the epithelium of intestine and kidney. Mutations in CUBN may play a role in autosomal recessive megaloblastic anemia. [provided by RefSeq, Jul 2008],

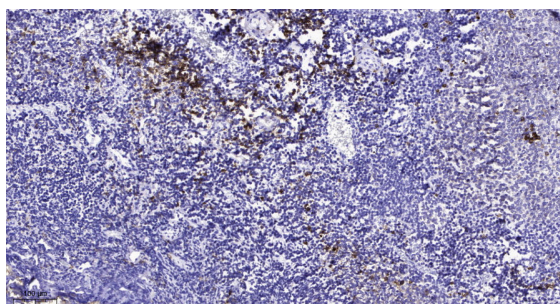
matters needing attention

Avoid repeated freezing and thawing!

Usage suggestions

This product can be used in immunological reaction related experiments. For more information, please consult technical personnel.

Products Images



Immunohistochemical analysis of paraffin-embedded human tonsil. 1, Antibody was diluted at 1:200(4° overnight). 2, Tris-EDTA,pH9.0 was used for antigen retrieval. 3,Secondary antibody was diluted at 1:200(room temperature, 45min).